

HOW SECURITY MONITORING WORKS

HOME SAFETY TIPS



PROTECTION AROUND THE CLOCK

Protection 1 security monitoring centers provide protection for you and your family 24/7. With five state-of-the-art monitoring centers, Protection 1 delivers fast alarm responses to help you protect what matters most.

FREQUENCY OF BREAK-INS

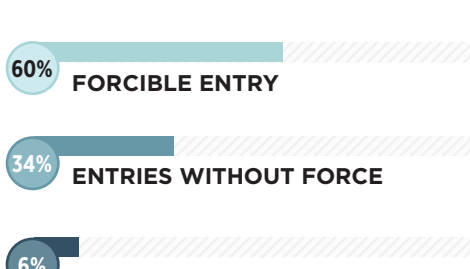


IN 2012, THERE WERE

2,103,787

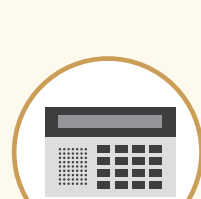
BURGLARIES REPORTED

BURGLAR ENTRY APPROACHES



MAXIMUM SECURITY

Homes have **less than a 1% chance** of being burglarized when multiple security features are used.



ALARM SYSTEM



DEADBOLT LOCKS

Can act as a deterrent since they're difficult to dislodge, making it harder to force entry.



GLASS BREAK SENSORS

Decrease detection time during an attempted intrusion and activate an alarm before entry.



LIGHTING

Make it look like you're home by keeping the interior and exterior of your home well-lit.

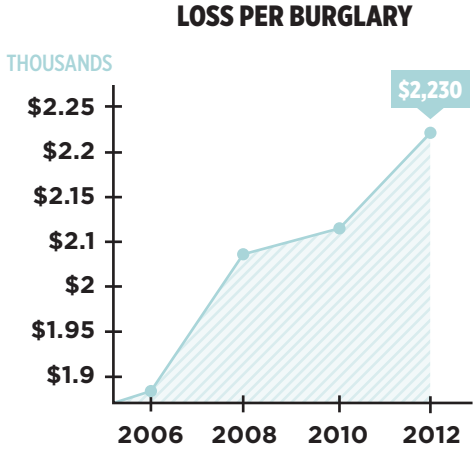


VIDEO SURVEILLANCE

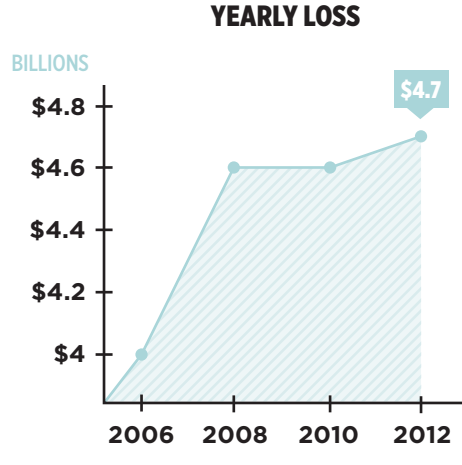
Keep tabs on your home and scare off thieves by letting them know they will get caught on tape.

ESTIMATED LOSS

LOSS PER BURGLARY



YEARLY LOSS



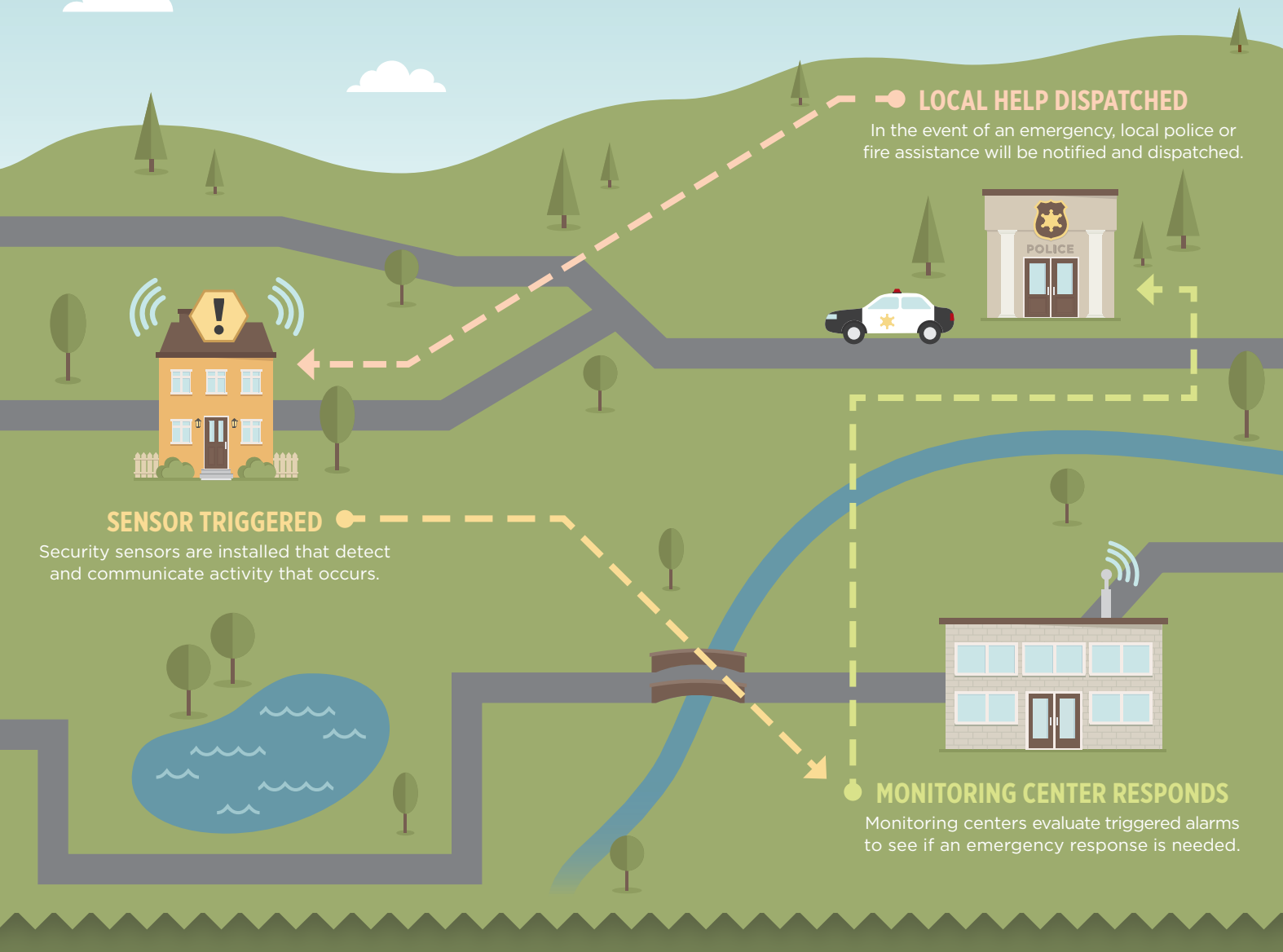
HOMES WITHOUT AN ALARM SYSTEM ARE **3 TIMES MORE LIKELY** TO BE BURGLARIZED



9 IN 10 CONVICTED BURGLARS ADMIT TO AVOIDING HOMES WITH A MONITORED SECURITY SYSTEM

PROTECTION 1 SECURITY SYSTEMS

HOW IT WORKS



TYPES OF SECURITY MONITORING

FOR MAXIMUM PROTECTION, ESTABLISH A BACKUP BY COMBINING TWO LAYERS OF COMMUNICATION

CELLULAR

Considered the most secure; provides added protection against cut phone lines and power outages.



Availability limited to areas with a strong cellular signal; often the most expensive option.

BROADBAND

Up to four times faster than a landline—and typically less expensive than cellular.



Internet connection may not always be reliable.

LANDLINE

Readily available across the country. Works with basic home security equipment, making it easy to get started with home monitoring.



Vulnerable to power outages and cut wires. Not compatible with remote access features.

REDUNDANT HOME ALARM MONITORING

THREE TIMES THE PROTECTION FOR THREE TIMES THE PEACE OF MIND

1 THE PRIMARY SERVER



When your alarm goes off, it transmits a signal through the primary server, an FM Approved, UL-listed facility, equipped with a uninterruptible power supply and backup generators.

2 THE ON-SITE BACKUP SYSTEM



All activated alarms automatically go through secondary backup equipment.

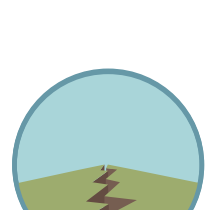
3 THE DISASTER RECOVERY CENTER



All alarms are transmitted to the off-site Disaster Recovery Center to address the possibility of a catastrophic event affecting operations at the main center.

EXTRA BACKUP PROTECTION

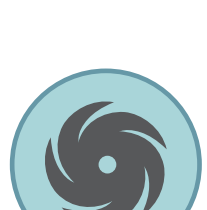
MAKE SURE YOUR MONITORING COMPANY IS PREPARED FOR DISASTER



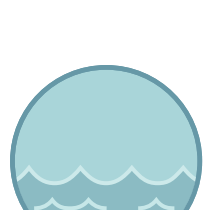
EARTHQUAKE



TORNADO



HURRICANE



FLOODING

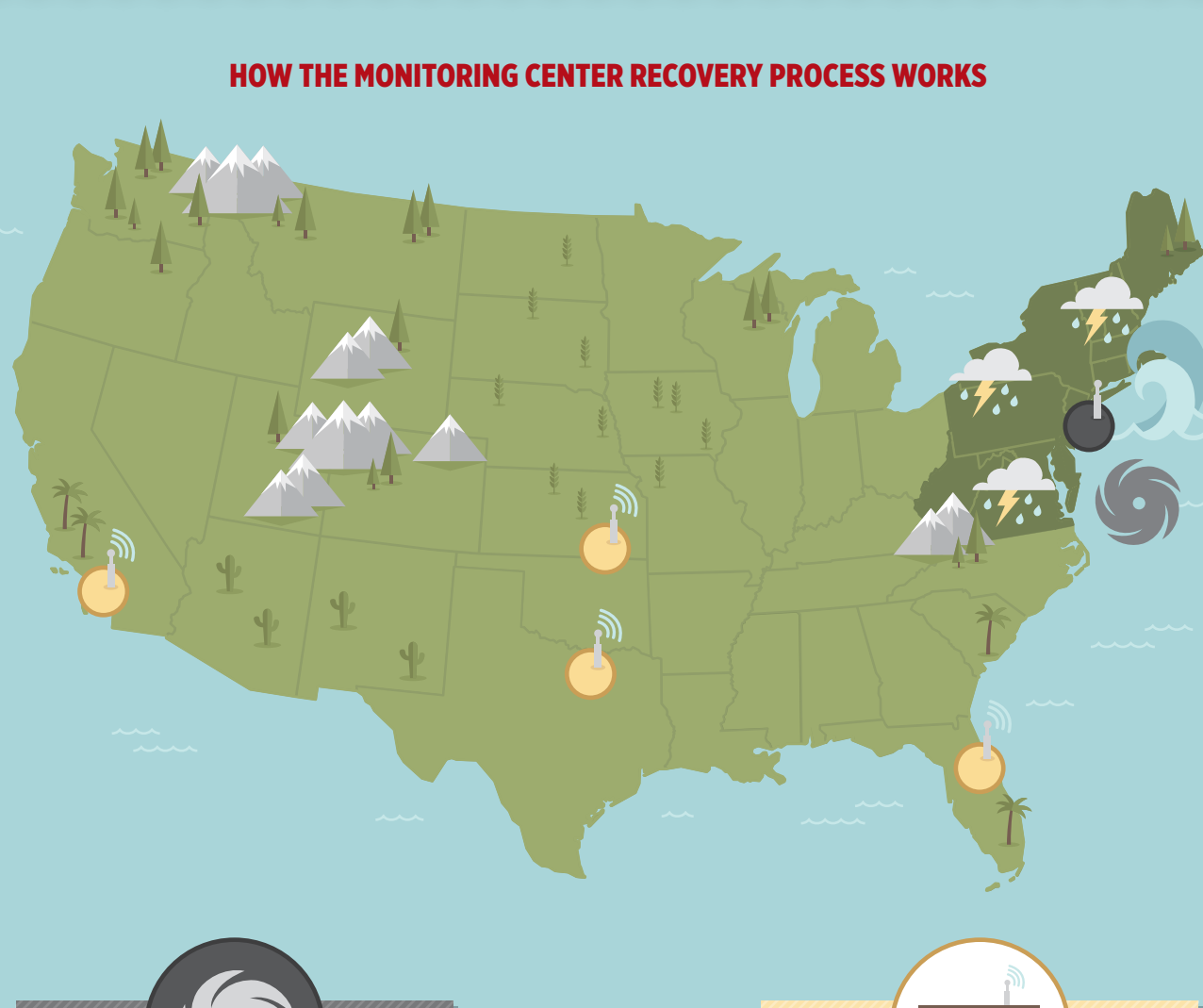


STORMS & WIND



WINTER STORMS

HOW THE MONITORING CENTER RECOVERY PROCESS WORKS



SOURCES

- www.familyhomesecurity.com/how-a-monitored-security-system-affects-crime-statistics
- www.fbi.gov/stats-services/crimestats
- www.protection1.com/home-security-systems/learn/why-choose/reliable-security-monitoring
- www.protection1.com/home-security-systems/learn/why-choose/reliable-security-monitoring/home-alarm-monitoring-systems
- www.safewise.com/blog/criteria-for-a-good-security-system

Protection1.com



Find original posts about Protection 1 Security here: >>>

